



## In This Issue:

- > The Shipyard | 4,350 Ton Dredge Barge Load Out
- > Night Move | The Vessel & Boiler Transport
- > Berard @ Workboat Show | New Orleans
- > Berard @ ABC Conference | Miami
- > A Holiday Message From The Berard Team

**BERARD**  
SINCE  
1945

The Mega Transport Experts

# The Shipyard 4,350 Ton Dredge Barge Load Out



## Job Specs

**Weight:**  
4,350 Tons

**Dimensions:**  
336'L x 68'W

**Equipment Used:** 136 axle lines of SPMTs, 6 power packs, 2 deck spacers, barge ramps, steel plate and winch trucks

Making massive shipyard moves has been a specialty of ours for several decades. The Berard team recently transported and loaded out a 4,350 ton dredge barge for a major South Louisiana shipyard. The team began by lifting the goliath sized vessel from its supports and moving it through the shipyard to a waiting dry dock. The 136 axle lines of SPMTs were instrumental in maneuvering the vessel between other builds on site while on its way to the load out area. The Berard team and the client's dry dock team worked together flawlessly to make the load out a safe and successful one. Another ship launched and another client schedule kept on time.





# Night Move The Vessel & Boiler Transport



## Job Specs

### Weight:

323,000 & 356,000 lbs.

### Dimensions:

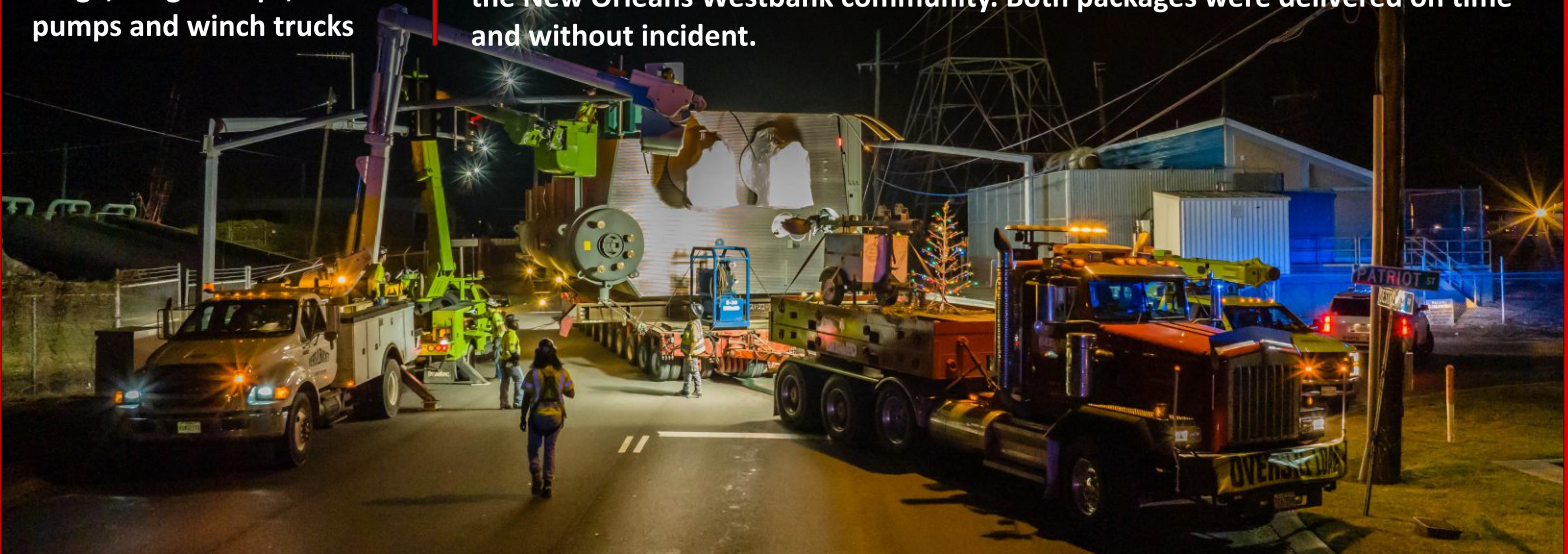
60'L x 9'-10"W x 15'-8"H

52'-10"L x 24'-2"W x 20'-3"H

### Equipment Used:

16 axle Faymonville ModulMAX hydraulic trailer, 12 axle Goldhofer THP/SL, prime movers, BTI 1945 deck barge, barge ramps, ballast pumps and winch trucks

The Berard team accepted the task of delivering an exchanger vessel weighing 356,000 lbs. and a package boiler weighing 323,000 lbs. to a petrochemical facility near New Orleans, LA. With limited routing to the destination site, Berard engineers determined barging the cargo to a roll-off dock close to the project site would be the most efficient solution. Berard transported the exchanger from a Houston, TX area fabricator to a barge loading site using a 16 axle line hydraulic platform trailer, then loaded out both packages using the same trailer onto the BTI 1945 deck barge. The barge arrived at a roll-off dock near Harvey, LA, where the Berard team used a 12 axle hydraulic platform trailer to roll both packages to the dock. The same trailer then transported both packages to the destination site. With the boiler having loaded dimensions of 24' wide and 20' high, the move was conducted at night to reduce impact on the New Orleans Westbank community. Both packages were delivered on time and without incident.







SEE US AT



# INTERNATIONAL WORKBOAT SHOW

NOV 30 - DEC 2, 2022

**BOOTH 3037**

MORIAL CONVENTION CENTER - NEW ORLEANS, LOUISIANA

It's showtime! The team will be exhibiting at the 2022 International Workboat Show 2022 in New Orleans, Louisiana, from November 30th to December 2nd. The show is one of our best attended and our sales and marketing team will be on site ready to greet attendees from around the nation and the globe. We're located in booth 3037. Stop by and see the team!

Then it's off to the sunshine state. The team will be exhibiting at the International Accelerated Bridge Construction Conference 2022 in Miami, Florida at the Hyatt Regency from December 7th-9th. The show highlights accelerated bridge construction techniques and is attended by the nations most prestigious civil infrastructure construction companies. We're located in booth 232.

SEE US AT

# International Accelerated Bridge Construction Conference

DECEMBER 7-9, 2022

**BOOTH 232**

HYATT REGENCY - MIAMI, FLORIDA

# A Holiday Message From The Berard Team

All of us at Berard wish each and everyone of our team members, their families, and our clients a safe and happy holiday season.

May the Christmas Season bring only happiness and joy to you and your family.



> Birthdays @ Berard

# Happy Birthday!

Happy Birthday to These Dedicated Team Members!

Amanda Hebert  
Raven Naquin  
Jacob Rogers